

MATRIX AI NETWORK 3.0

Into the Matrix

www.matrix.io



CONTENT

01 | WHAT ?

02 | WHY ?

03 | HOW ?

- Four Phases of Matrix 3.0
- Deep Dive into Phase 1
- Roadmap of Phase 1

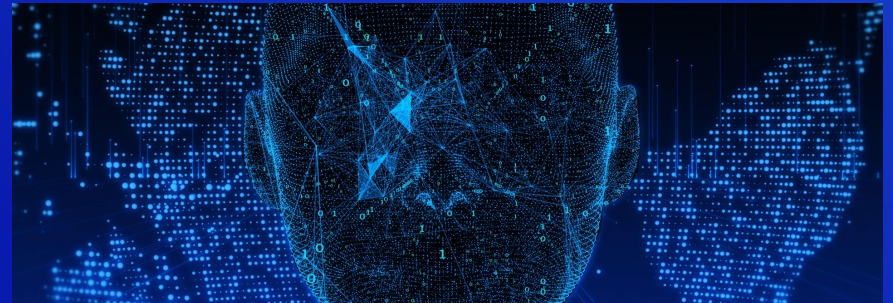
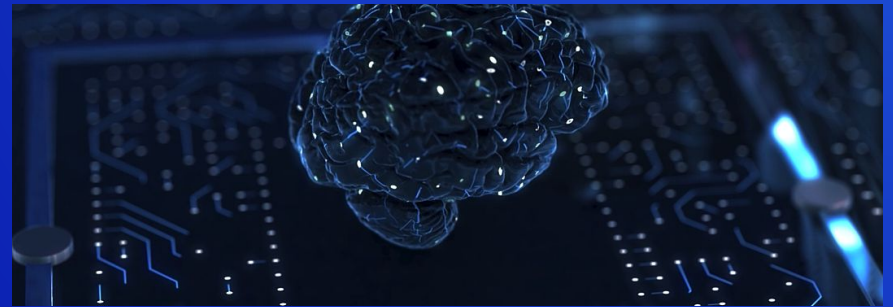
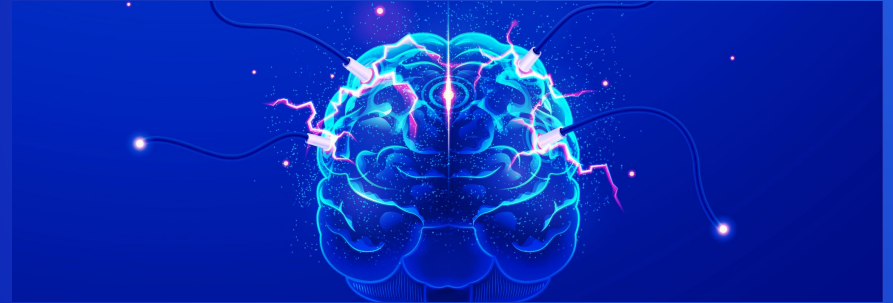


Into The Matrix

AVI is short for Avatar Intelligence. While AI focuses on training machines to have similar capacities as human beings, AVI aims to realize the scenario imagined by the Matrix films where human brain is uploaded to the Internet, or where a program identical to a user's brain is created on the Internet.

This means everyone will have his/her own digital avatar in the Metaverse. This avatar can be used to live life and do various tasks in the Metaverse under users' authorisation.

This is the ultimate use scenario of the Metaverse.



Matrix 3.0 Features



Receiving
Ports



Distributed
Storage



Avatar Intelligence
Modelling



Brain wave-based
AI algorithm
services:



Avatar
Intelligence's
distributed
computing



Avatar
Intelligence
accessing



Avatar
Intelligence
transfer

MATRIX 3.0: Into the Matrix

Matrix 3.0 will build a general-purpose platform around Avatar Intelligence. Any user can use the tools on Matrix to upload and store their brain wave data to create their individual avatars through Avatar Intelligence powered by Matrix's distributed computing. These avatars can be transferred to any Metaverse platform to use.

Features

- **Receiving ports:** Users can upload brain wave data through wearables, intrusive hardware as well as Matrix ports.
- **Distributed storage:** Users brain wave data are uploaded to the distributed storage;
- **Avatar Intelligence modelling:** Users AI avatar can be created using their brain wave data.

Features

- **Brain wave-based AI algorithm services:** MANAS will provide services such as better focus, better sleep, etc;
- **Avatar Intelligence's distributed computing:** This feature is provided by MANTA.
- **Avatar Intelligence accessing:** Users can authorise Third-party platforms to use their AvI through Matrix ports.
- **Avatar Intelligence transfer:** Users can transfer their AvI to any Metaverse platform through Matrix's ports.

MATRIX 3.0 Economic Model

Relevant Matrix Modules



**MANTA
ML PLATFORM**



**MANIA
NFT AUTH PLATFORM**



**MANAS
AI SERVICE PLATFORM**



IPFS



**MATRIX
BLOCKCHAIN**

MATRIX 3.0 Economic Model



✓ Pay MAN for storage

Users will need to pay MAN for storage fee when uploading their brain wave data

✓ MANTA for computing power

Users will need MANTA when training their avatars using brain wave data. They will need to pay MAN to computing power providers;

✓ Stake MAN

When people use their avatars to serve or interact with others, they need to stake a certain amount of MAN or pay MAN for verification

✓ Pay MAN for avatars

Users will need to pay MAN for storing, accessing and transferring their avatars.

Why do we create AvI?

01

The founding of Matrix AI Network is inspired by the Matrix films. We continue to be inspired by this vision.

02

The concept of the Metaverse is similar to the Matrix films.

03

The tremendous market value of the Metaverse



In its new report, Asia's Metaverse

A Strategy for Accelerating Economic Impact, Deloitte researched the potential impact of the Metaverse on 12 Asian economies. By 2035, the Metaverse is projected to contribute a yearly 80,000,000 to 140,000,000 USD to the GDP of Asia.

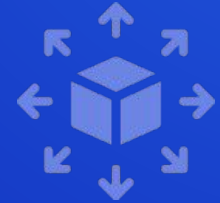
What problems do we solve?

- ✓ The emotional attachment between real people and their digital avatars
- ✓ Training digital avatars
- ✓ Taking digital avatars to any Metaverse platform
- ✓ A better me

WHY BLOCKCHAIN

Decentralisation

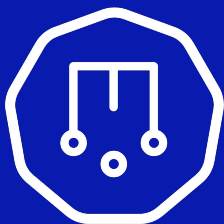
AvI needs to run on decentralised networks in order to ensure user ownership of UI assets are not tempered with by third parties.



Asset Authentication

Users' AvI will create all sorts of value in the Metaverse. The characteristics of the blockchain guarantees these digital assets are kept safe





MANTA

In addition to blockchain, Avl needs the support of distributed computing. Matrix provides an efficient distributed computing network.



MANIA

Matrix's MANIA can authenticate different types of AI algorithms and data, and convert them into assets. This will not only guarantee people's ownership of digital assets are not compromised, but also give digital assets good liquidity.



MANAS

Services created by Avl can be exported through MANAS to serve more people and create more value.



WHY MATRIX

THE FOUR PHASES OF MATRIX 3.0

are named after the four Matrix films.



Genesis

Core functions of Matrix 2.0 will be perfected so that the hardware requirement of AVI can be met. At the same time, basic brain electric signals will be stored to set up preliminary avatars.



Reloaded

Users' brain wave data can be uploaded through wearable devices to create the foundation of avatars. Users can interact with these avatars.



Revolutions

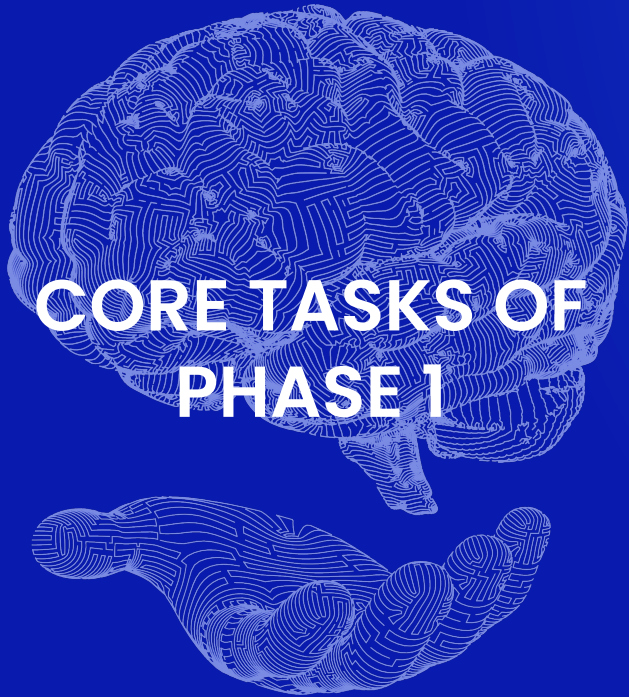
Connecting to deep brain signals to receive AVI data. Basic interactions among AVIs and the transfer of AVI across different networks will be supported.



Resurrections

Better algorithms will allow users to create perfect AVI to create value in the Metaverse on their behalf. The ecosystem surrounding AI 2.0 will also further improve.





CORE TASKS OF PHASE 1



PROCESSING

Supporting user brain wave data collection/storage and algorithm processing




INTEGRATION

Supporting the creation and transfer of avatars on different Metaverse platforms



UPGRADE

Upgrading unfinished parts of Matrix 1.0 and Matrix 2.0

- 
- Opening up ports to receive users brain wave data.
 - Distributed storage of brain wave data
 - Preliminary analysis and modelling of brain wave data
 - Feedback and services based on brain wave data
 - Brain wave model demo

MATRIX 3.0 PHASE 1: PROCESSING

MATRIX 3.0 PHASE 1: UPGRADE

- Cross-platform AI Service Export

Applications on any blockchain platform can directly access AI services on MANAS

- Open Computing Power Access

Third-party computing power can access MANTA at any time

- Auto AI Training

Even users with no background can build and train their own AI services and algorithms on Matrix



SPECIAL PATCH FOR MATRIX 1.0

Intelligent Contract

Users will be able to write smart contracts with natural human languages



SPECIAL PATCH FOR MATRIX 2.0

- Cross-platform Computing Power Export

Applications on any blockchain platform can directly access the distributed computing power on MANTA

- Natural human language phonetic and semantic recognition
- Languages will be recognised and converted into standard language formats
- Machine learning on mainstream blockchain smart contract modules
- Auto conversion from standard language formats to smart contract modules
- Auto conversion from natural language formats to codes

- Supporting mainstream smart contract languages, such as solidity, move, etc
- Supporting cross-chain access

1.0 Patch Core Functions

- Supporting open access ports on different platforms including MANTA and MANAS
- A secure and accurate cross-chain bookkeeping system
- A cross-chain settlement system (Cross-chain Swap)
- Open computing power authentication module
- Open computing power service monitoring module

- An access and calculation system based on smart contracts
- Auto-ML front and back ends
- Client app for installing and running Auto-ML

2.0 Patch Core Functions

UPGRADE

- Obtaining and standardised division of ordinary blockchain platform contracts
- Personalised smart contract module
- Opening up the computing power authentication module
- Opening up the computing power work monitoring module
- Opening up the computing power access and calculation system

PROCESSING and INTEGRATION

- Distributed storage structure for brain wave data
- Minting and authentication of brain wave data NFT
- Open ports for uploading brain wave data

PHASE 1 ROADMAP MILESTONE: 1

Time period: 2023.1 – 2023.6

UPGRADE

- Connecting to third-party semantic recognition module
- Transition of phonetic and semantic recognition to standard languages
- Open computing power access pre-launch testing
- Cross-chain settlement and access system
- Ports for the cross-chain use of computing power

PROCESSING and INTEGRATION

- Launching the first application
- Brain wave data analysis and preliminary modelling

PHASE 1 ROADMAP MILESTONE: 2

Time period: 2023.7 – 2023.12

UPGRADE

- Transition from standard languages to modularised contracts
- Personalised rewriting of standard smart contract modules
- Supporting mainstream contract languages

- Cross-chain bookkeeping
- Cross-chain asset swap
- The oracle machine goes online

PROCESSING and INTEGRATION

- Positive feedback services based on brain wave data
- Building services with brain wave data avatars

PHASE 1 ROADMAP MILESTONE: 3

Time period: 2024.1 – 2024.4

UPGRADE

- Auto conversion from standard language to codes
- The module combination and security structure of codes
- General-purpose computing power client app
- General-purpose external access ports

PROCESSING and INTEGRATION

- Avatar Intelligence version one demo

PHASE 1 ROADMAP MILESTONE: 4

Time period: 2024.5 – 2024.8

UPGRADE

- Auto-writing of personalised smart contracts based on templates
- Open personalised smart contract writing based on machine learning
- Contract security scanning tool based on machine learning
- Official interface for ordinary users
- User-friendly interface and settlement system
- Allowing third-party platforms to use development tools to set up computing power/service distribution systems on target platforms

PROCESSING and INTEGRATION

- Optimisation of Avatar Intelligence version one demo
- AVI open training features
- AVI front-end operation interface

PHASE 1 ROADMAP MILESTONE: 5

Time period: 2024.9 – 2024.12