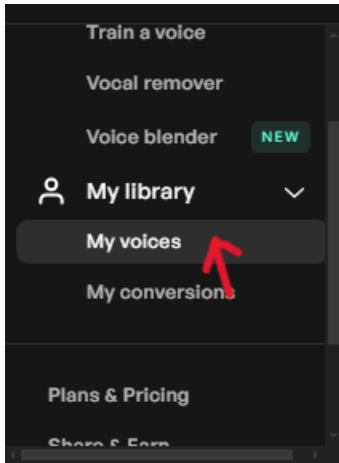


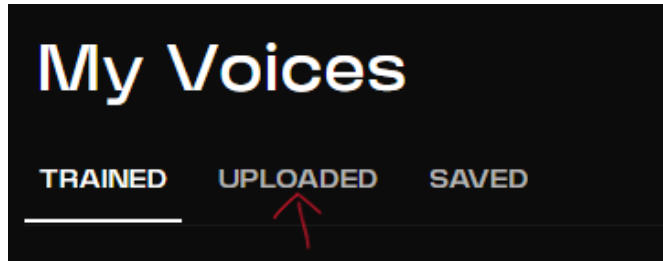
Rolz RVC to kits.ai Manual

By . RD VOICE

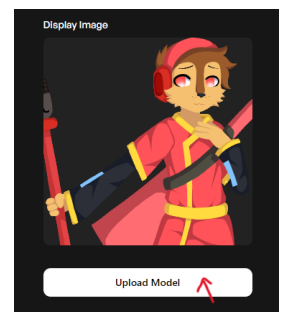
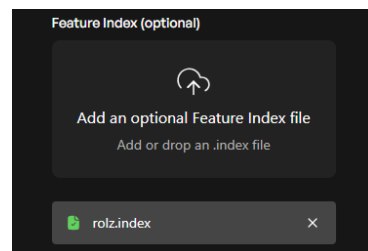
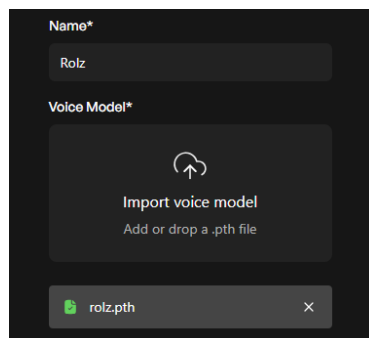
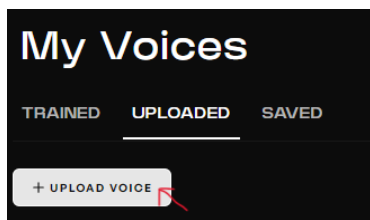
1.) Go to kits.ai and click My voices



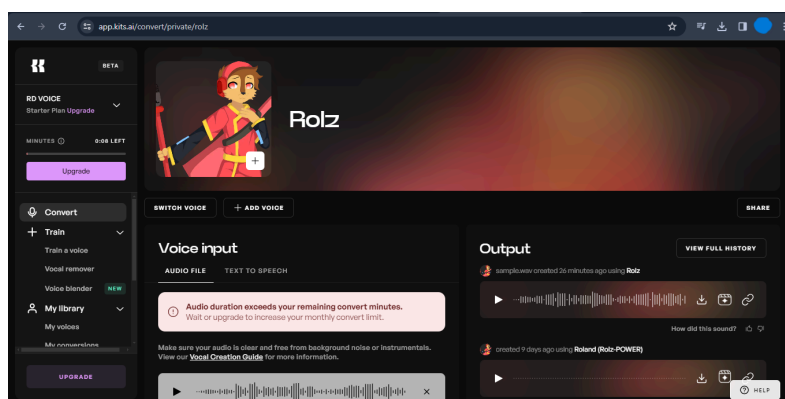
2.) Click Uploaded



3.) Next, select Upload your first voice, then upload the pth and index file, and last click Upload (you can add a name and an image to the file I uploaded).



4.) Then when it's uploaded, this should be shown after.



Some Problems:

“Model (name) is incompatible with kits.ai”

- Choose only the pth file